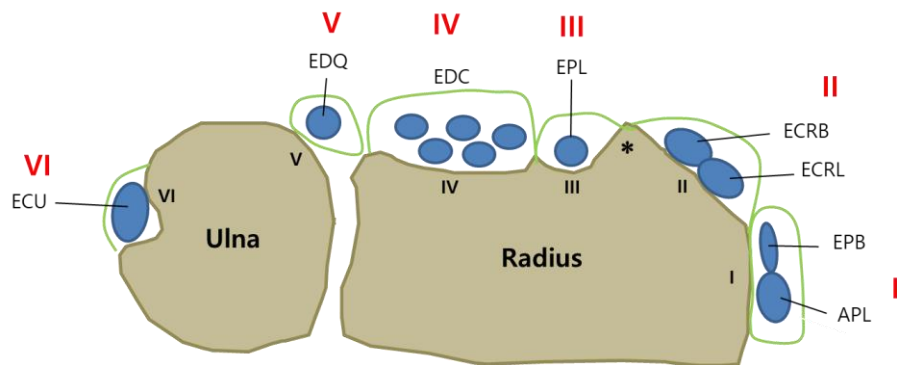


US of the hand and wrist

Soo-Jung Choi

In this talk, basic US anatomy and diagnostic pitfalls of the wrist & hand US will be covered.

1. Dorsal wrist



1ST extensor compartment (APL + EPB) –anatomic variation (multiple APL tendon slips and subcompartmentalization)

2ND extensor compartment (ECRL + ECRB)

3rd extensor compartment (EPL)

4TH extensor compartment (EDC + EIP)

5TH extensor compartment (EDQ)

6th extensor compartment (ECU)

2. Volar wrist

1) Flexor tendons

The FCR, FCU, palmaris longus – superficially located tendons at the distal forearm and wrist joint level.

The FPL, FDS and FDP enter the carpal tunnel with the median nerve.

2) Carpal tunnel (CT) and median nerve

Bony landmarks of the proximal CT – scaphoid and pisiform

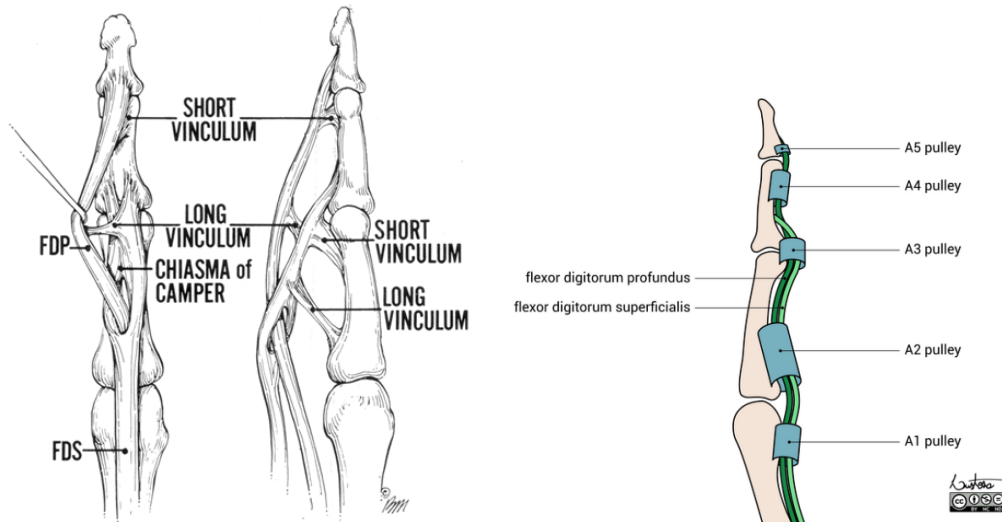
Bony landmarks for distal CT- tubercle of the trapezium and hook of the hamate

Palmar cutaneous branch of the MN

3) Guyon's canal and ulnar nerve

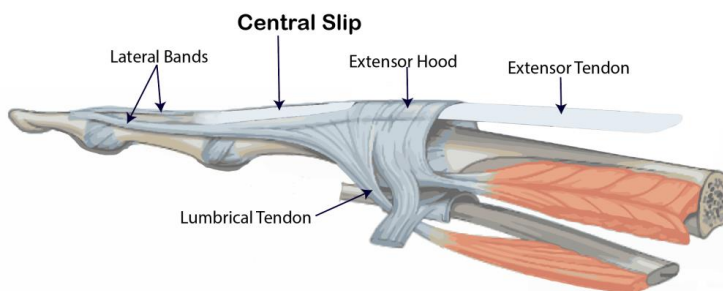
3. Finger

1) Flexor tendon and pulley system



http://www.davidnelson.md/articles/Tendon_laceration.htm

2) Extensor tendon



<https://fifevirtualhandclinic.co.uk/central-slip-injuries/>